



Rhode Island
Leadership
Education in
Neurodevelopmental
Disabilities

RI LEND

APPLICATION PACKET

The Rhode Island Leadership Education in Neurodevelopmental and Other Related Disabilities (RI LEND) offers a graduate level interdisciplinary training experience to prepare individuals from an array of professional disciplines and from culturally diverse backgrounds to assume leadership roles in the disability field serving children with autistic spectrum disorders and other neurodevelopmental disabilities and their families.



BROWN
Alpert Medical School



Hasbro Children's Hospital
The Pediatric Division of Rhode Island Hospital
A Lifespan Partner



Overview:

The Rhode Island Leadership Education in Neurodevelopmental and Other Related Disabilities (RI LEND) offers a graduate level interdisciplinary training experience to prepare individuals from diverse professional disciplines to assume leadership roles in the disability field. The purpose of the RI LEND training program is to improve the life course and health of infants, children, and adolescents with autism spectrum disorders and other neurodevelopmental disabilities.

The RI LEND is funded by the Maternal and Child Health Bureau of the Health Resources Services Administration. The RI LEND program represents a partnership between the W. Alpert Medical School of Brown University, Hasbro Children's/Rhode Island Hospital, and the Paul V. Sherlock Center for Developmental Disabilities at Rhode Island College. Our close collaborators include the RI Department of Health, the RI Parent Information Network, the Autism Project, the St. Joseph's Pediatric and Family Dental Centers, Women and Infants Hospital, Memorial Hospital of RI, the RI Consortium for Autism Treatment and Research, and RI Kids Count as well as Brown University's School of Public Health, Center for Innovation and Center for Children.



RI Curriculum:

The RI LEND curriculum emphasizes interdisciplinary, family centered and culturally competent practices and leadership skill development for graduate and post graduate level trainees. The program includes:

(1) didactic sessions (3 hours/week for an academic year) led by experts from a range of disciplines designed to help trainees develop the skills, knowledge and perspectives necessary to become complete, highly competent providers of neurodevelopmental services to families,

(2) a set of mentored clinical experiences with interdisciplinary teams in medical and community based settings; and

(3) a leadership project that allows the trainee to focus in depth on a topic of interest to them and relevant to their future work in the area of neurodevelopmental disabilities. Over the course of the year, trainees will be expected to participate in a minimum of 300 hours of didactic, clinical and interdisciplinary leadership training (approximately 12 hours/week for an academic year).

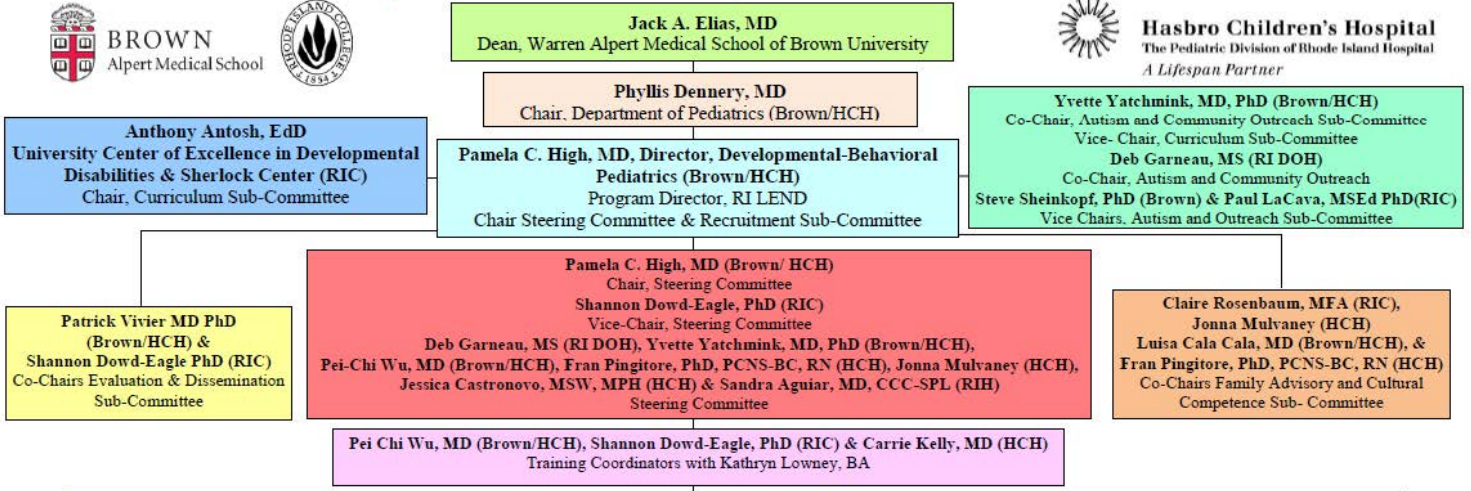
Core Curriculum Modules:

- Interdisciplinary Practice
- Life Course and Social Determinants of Health
- Overview of Neurological and Developmental Disabilities including Autism, Hearing Impairment, Multisensory Deficits, Prematurity and Intellectual Disability
- Leadership
- Family-Centered Practice and Medical Home
- Applications of Research Methodology, Quality Improvement and Program Evaluation to Neurodevelopmental Disabilities
- Cultural Competence
- Public Health, Policy and Advocacy
- Health Care Administration and Care Coordination for Children with Special Needs
- Universal Design and Assistive Technology
- Transition to Adulthood and Services for Children with Special Needs
- Local and National Resources for Children with Autism and Developmental Disabilities
- Emerging Issues including Neonatal Abstinence Syndrome

RI Leadership Education: Neurodevelopmental and Other Related Disabilities



Hasbro Children's Hospital
The Pediatric Division of Rhode Island Hospital
A Lifespan Partner



Core Discipline Interdisciplinary Coordinating Leaders* and Faculty

- 1.) **Pediatrics**
HCH/ Children's Neurodevelopment Center (CNDC)
Pamela High MD*, Yvette Yatchmink, MD, PhD*,
Pei Chi Wu MD, Carrie Kelly MD, Luisa Cala Cala MD
HCH/RI Screen to Succeed – Natalia Golova, MD
WHH Neonatal Follow-up RHAP – Betty Vohr, MD
MHRI Neurodevelopmental Center- Ana Garnecho, MD
- 2.) **Special Education**
RI College/Paul V. Sherlock Center
Anthony Antosh, EdD*, Paul LaCava, MEd, PhD*
Susan Dell, PhD
- 3.) **Family Discipline**
RIC/Sherlock Center - Claire Rosenbaum, MFA**
HCH/RIH/Family Advisory Council-Jonna Mulvaney*
RI Autism Project - Joanne Quinn, Miny Ortiz
- 4.) **Public Health Policy and Advocacy**
Brown School of Public Health, Brown Center for
Innovation and HCH - Patrick Vivier, MD, PhD*
RI DOH- Deb Garneau, MS*
HCH/PCMH Kids – Patricia Flanagan, MD
RI Kids Count- Elizabeth Burke-Bryant, JD
- 5.) **Pediatric Dentistry**
St. Joseph Health Services of RI –
Daniel Kane, DMD* & John Kiang, DMD, MA
- 6.) **Nursing**
HCH/Family Centered Care –
Fran Pingitore, PhD, PCNS-BC, RN*
- 7.) **Social Work**
HCH/CNDC – Jessica Castronovo, MSW, MPH*
- 8.) **Genetics**
HCH/CNDC – Mary-Kathryn Chambers, MS, GCG*
- 9.) **Speech-Language Pathology**
HCH – Sandra Aguiar MD, CCC – SPL*
RI College/Sherlock Center- Susan Dell, PhD
- 10.) **Psychology**
RI College/Sherlock Cr.-Shannon Dowd-Eagle, PhD*
WHH/Brown Center/RI CART- Stephen Sheinkopf, PhD
HCH/CNDC -Barbara Kao PhD* and Deb Rasile, PhD
Bradley Hospital – Karyn Blane, PhD



Admission Guidelines and Application:

Interested applicants must complete the online application form by insert date here.

Applications will require:

(1) matriculation in a graduate program or graduation from a graduate program in audiology, genetic counseling, medicine, nursing, pediatric dentistry, public health, physical therapy, psychology, special education, speech and language pathology, AND/OR they may be parents of children with autism or another developmental disability or a self-advocate.

(2) demographic information,

(3) resume, and

(4) a one-page personal statement documenting life experience with a disability or professional experience and commitment to supporting individuals with autism or other neurodevelopmental disabilities. Trainees are expected to become leaders in their fields; thus, should demonstrate leadership potential.

Our aim is to reduce health barriers and disparities by recruiting culturally-diverse and high-quality professionals representing Maternal Child Health-related disciplines as RI-Leadership Education in Neurodevelopmental Disability trainees.

RI LEND Core Faculty:

Pediatrics

Pamela High, MD
Yvette Yatchmink, MD, PhD
Pei Chi Wu, MD
Luisa Cala Cala, MD
Carrie Kelly, MD
Betty Vohr, MD
Natalie Golova, MD

Special Education

Anthony Antosh, EdD
Paul LaCava, MEd, PhD
Susan Dell, PhD

Family

Claire Rosenbaum, MFA
Jonna Mulvaney, CCHW
Joanne Quinn

Public Health Policy and Advocacy

Patrick Vivier, MD, PhD
Deb Garneau, MS
Patricia Flanagan, MD
Elizabeth Burke-Bryant, JD

Pediatric Dentistry

Daniel Kane, DMD

Nursing

Fran Pingitore, PhD, PCNS-BC, RN

Social Work

Jessica Castronovo, LICSW, MSW, MPH

Genetics

Mary-Kate Chambers, MS, CGC

Speech-Language Pathology

Sandra Aguiar, MS, CCC-SPL

Psychology

Shannon Dowd-Eagle, PhD
Barbara Kao, PhD
Deb Rasile, PhD
Karyn Blane, PhD
Stephen Sheinkopf, PhD





**RHODE ISLAND - LEADERSHIP EDUCATION IN NEURODEVELOPMENTAL
DISABILITIES (RI-LEND TRAINING PROGRAM)**

APPLICATION FORM FOR FELLOWSHIP

CONTACT and DEMOGRAPHIC INFORMATION:

Name: _____

Address (home): _____

City/State/Zip: _____

Phone: _____

Email: _____

Address (work): _____

Professional discipline: _____

Citizenship: _____ If not US citizen, do you have a green card? Yes / No

Race: _____ Ethnicity: Hispanic or Non-Hispanic

Are you a family member of a child with a disability or self-advocate with a disability? Yes / No

Where did you hear about LEND? _____

ACADEMIC BACKGROUND (include current program):

College/University	Dates	Degree

With this application, please submit:

1. A curriculum vita/resume
2. A one-page personal statement

Please send above information to:

Kathryn Lowney
RI LEND Program, Division of DBP
Children's Neurodevelopmental Center
335R Prairie Ave, Suite 1A
Providence, RI 02905

Or send to Kathryn.Lowney@lifefspan.org

Inquiries can be made to Dr. Pamela High at 401-444-5440 or phigh@lifefspan.org

